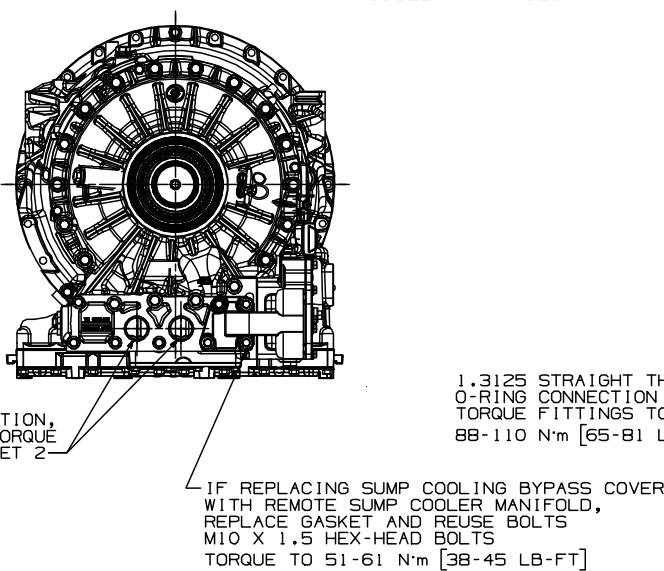
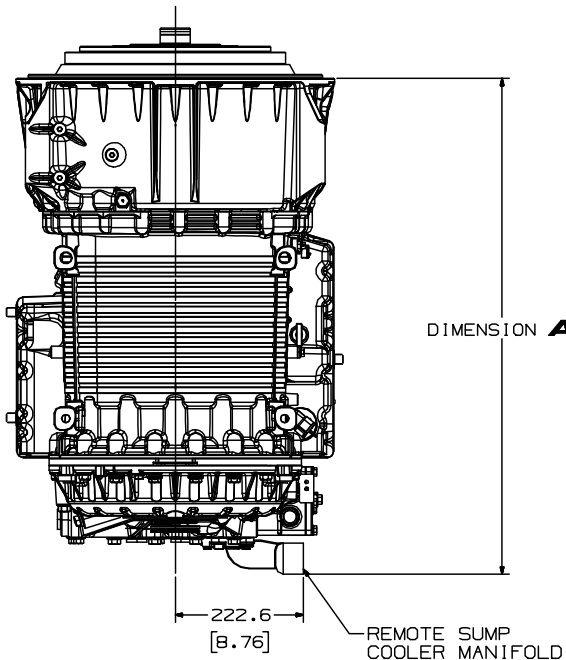


TRANSMISSION CONFIGURATION	DIMENSION A	DIMENSION B	DIMENSION C
6-SPEED NO PTO PROVISION	863.4 [33.99]	836.5 [32.93]	782.2 [30.79]
6-SPEED WITH PTO PROVISION	936.4 [36.87]	909.5 [35.81]	855.2 [33.67]
7-SPEED NO PTO PROVISION	1049.3 [41.31]	1022.4 [40.25]	968.1 [38.11]
7-SPEED WITH PTO PROVISION	1122.3 [44.19]	1095.4 [43.13]	1041.1 [40.99]

RETARDER/SUMP COOLER



FOR COOLER PORT LOCATION,
THREAD AND FITTING TORQUE
INFORMATION, SEE SHEET 2

NON-PTO, SHALLOW SUMP TRANSMISSION IS SHOWN FOR ILLUSTRATION PURPOSES,
FOR INFORMATION NOT SHOWN AND OTHER TRANSMISSION CONFIGURATIONS,
SEE DRAWINGS AS67-416 AND AS67-417.

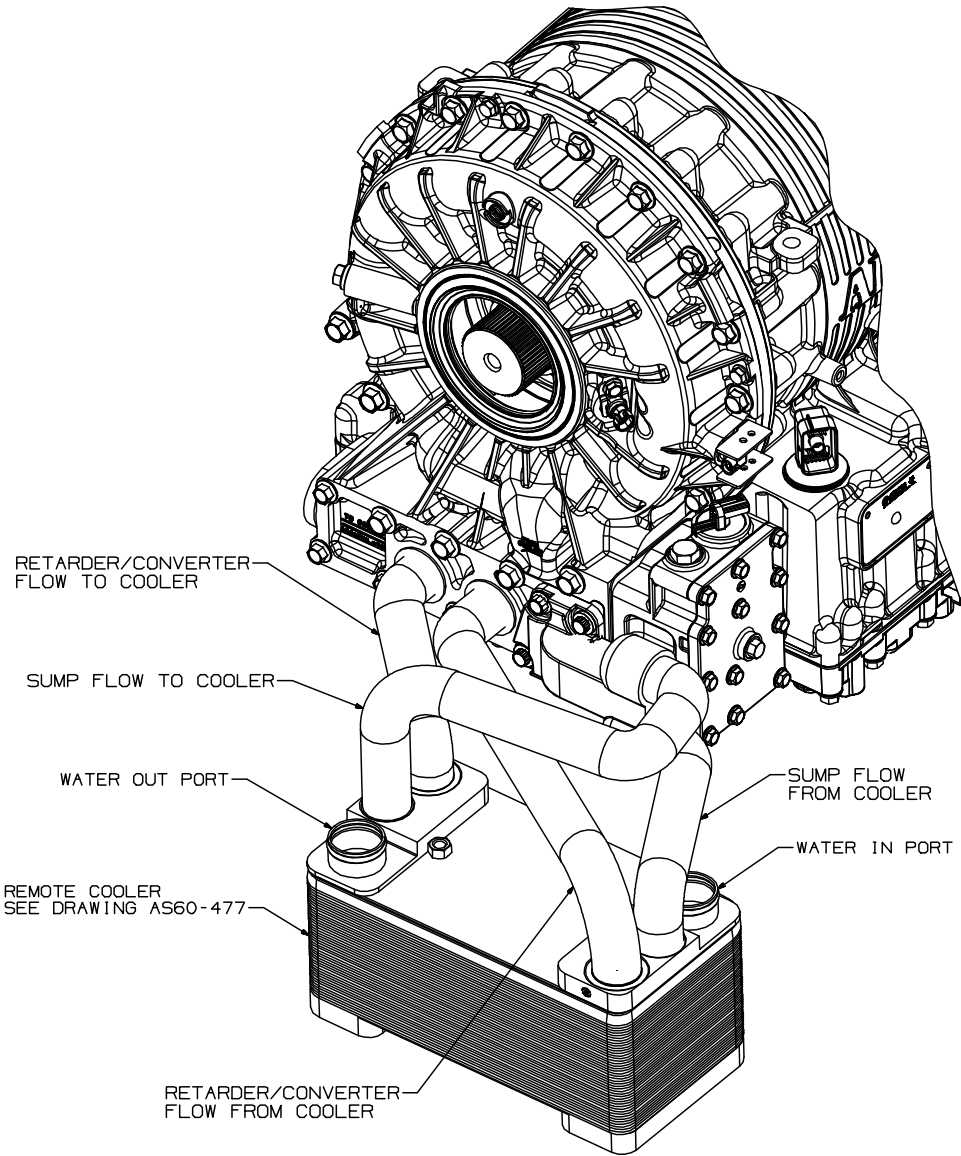
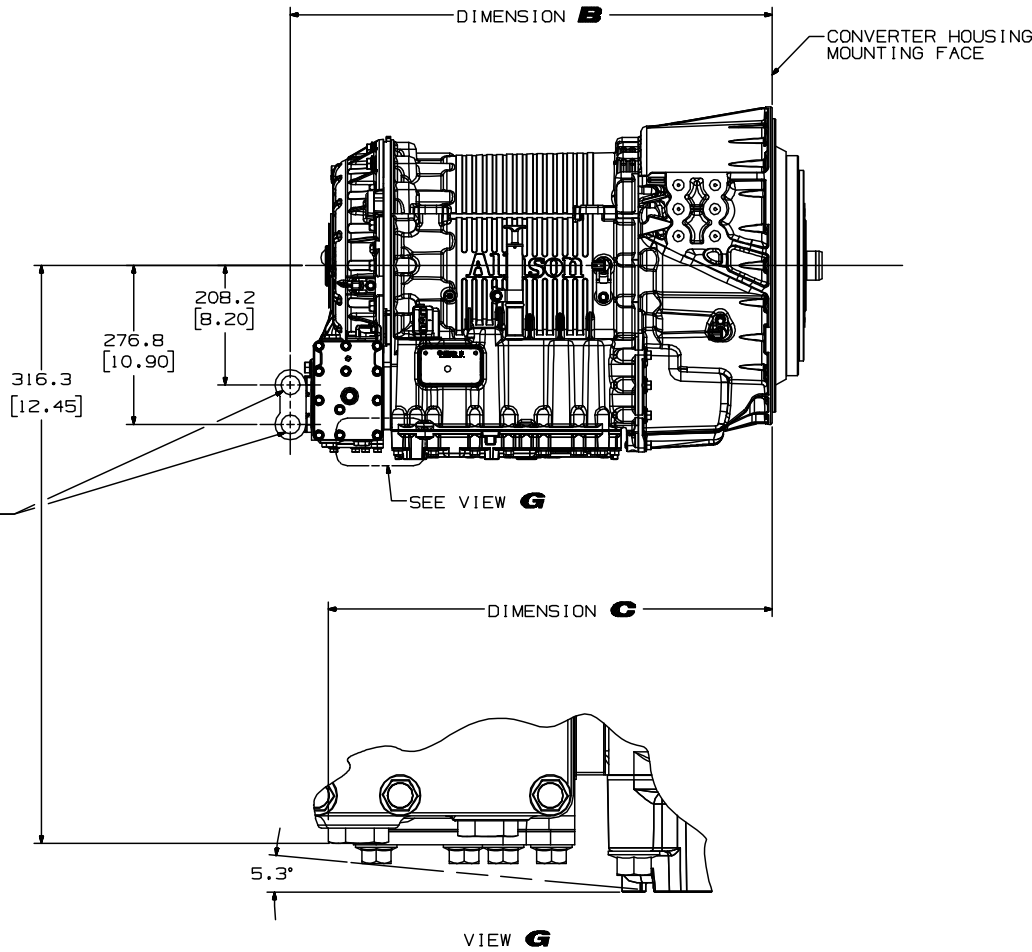
FOR RETARDER OPTION, SEE DRAWING AS67-418.

THE REMOTE SUMP COOLER MANIFOLD IS AVAILABLE
AS PART OF THE TRANSMISSION ASSEMBLY FOR SELECT
MODELS IN CERTAIN GEOGRAPHICAL AREAS. CONSULT
YOUR ALLISON REPRESENTATIVE.

"TWO-WRENCH" INSTALLATION METHOD IS RECOMMENDED
WHENEVER ATTACHING HOSES TO TRANSMISSION FITTINGS
TO PREVENT ADDITIONAL ROTATION OF THE TRANSMISSION
FITTING, LEADING TO AN OVER TORQUE CONDITION.

TORQUES SHOWN ARE FOR PLAIN (NON-PLATED) FASTENERS AND
OTHER THREADED COMPONENTS SUPPLIED AND INSTALLED BY THE
VEHICLE BUILDER. TORQUE REQUIREMENTS SHOULD BE REVIEWED
IF PLATED FASTENERS WILL BE USED. CONSULT THE SUPPLIER.

FOR CONTROLS INFORMATION REFER TO ALLISON CONTROLS TECH DATA.



ISOMETRIC VIEW

G	(1)UPDATED CONVERTER HSG TO THE LATEST HARDWARE	16JL18 RH JC
F	(1)UPDATED BREATHER TO THE LATEST HARDWARE	22AU17 RH JH
E	(1)REMOVED "ALLISON 4TH GEN CONTROLS" BLOCK (2)ADDED "THE REMOTE SUMP COOLER MANIFOLD..." NOTE (3)REVISED TITLE "RETARDER/SUMP COOLER" WAS WITH REMOTE SUMP AND RETARDER/CONVERTER COOLER" (4)REVISED TITLE BLOCK (5)REMOVED "ALLISON SUPPLIED REMOTE SUMP/RETARDER/ CONVERTER COOLER" SHEET (6,9)SEE SHEET 2	20JN16 RH JH
D	(1)UPDATED TO LATEST HARDWARE (2)ADDED "THE REMOTE SUMP..." NOTE (3)REMOVED "ALLISON 4TH GENERATION" BLOCK (4)REVISED "SIDE ACCUMULATOR PROVISION..." NOTE "AS67-418" WAS "AS67-406" (5)REVISED "FOR EXTERNAL HYDRAULIC..." NOTE (6)ADDED "FOR FEATURES AND DIMENSIONS..." NOTE (7)ADDED "FOR TRANSMISSION INSTALLATION..." NOTE (8)REMOVED SHEET 2 (9,12)SEE SHEET 3	09SE14 RH JH
C	1.3125 STRAIGHT THREAD "88-110 N·m (65-81 LB-FT)" WAS "54-68 N·m (40-50 LB-FT)" REVISED "FOR EXTERNAL HYDRAULIC CIRCUIT" NOTE "DATA SECTION" WAS "SPECIFICATIONS SECTION" SEE SHEET 2	06MY08 RH JH
B	UPDATED TO LATEST HARDWARE ADDED "TORQUES SHOWN ARE FOR PLAIN..." NOTE REVISED TRANSMISSION CONFIGURATION BLOCK	06N006 RH JH
A	UPDATED TO LATEST HARDWARE SEE SHEET 3	24AUG06 RH JH
REV	DESCRIPTION	DATE
FR2	REVISED	DATE

NX	FR2
	METRIC
THIRD ANGLE	

DIMENSIONS SHOWN IN PARENTHESES ARE
IN INCHES, AND FOR REFERENCE ONLY

FR1	DWG. NO. AS67-477	LTR SH G 1
-----	----------------------	---------------

THE INFORMATION CONTAINED HEREIN IS PROPRIETARY AND THE
PROPERTY OF ALLISON TRANSMISSION, INC. AND MAY NOT BE
REPRODUCED, DISCLOSED OR USED FOR ANY PURPOSE OTHER THAN A
QUOTATION TO OR ON ORDER FROM ALLISON TRANSMISSION, INC.
WITHOUT THE SPECIFIC WRITTEN AUTHORIZATION OF
ALLISON TRANSMISSION, INC.

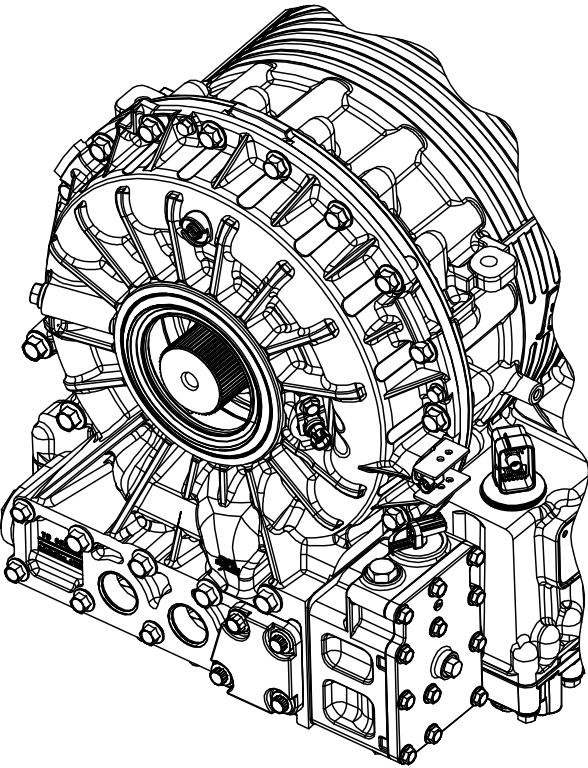
MODEL 4000 PRODUCT FAMILY	SIZE/CAGE CODE DWG NO R 73342	AS67-477
---------------------------	----------------------------------	----------

SCALE NONE
CURRENT STATUS:
RX-Released - EXP

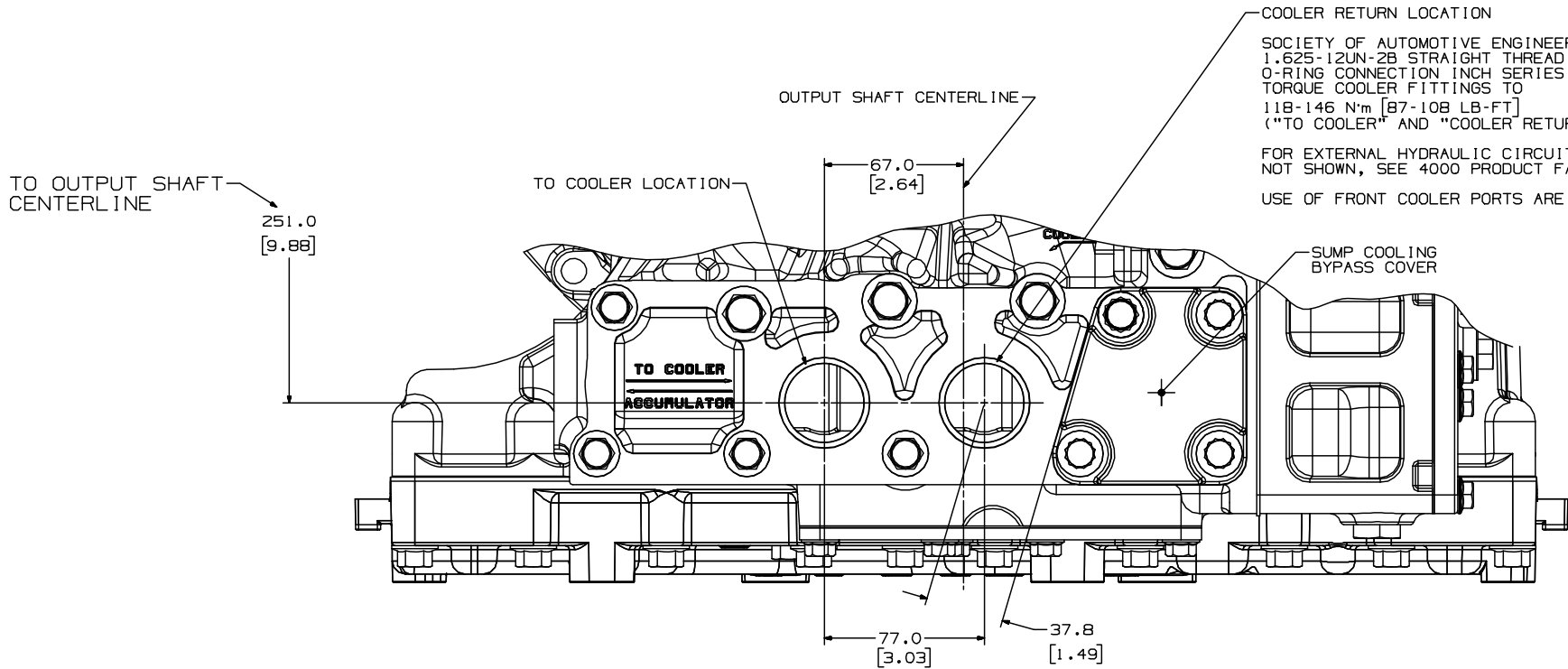
AS67-477
8 2

TRANSMISSION CONFIGURATION	DIMENSION D
6-SPEED NO PTO PROVISION	820.1 [32.29]
6-SPEED WITH PTO PROVISION	893.1 [35.17]
7-SPEED NO PTO PROVISION	1006.0 [39.61]
7-SPEED WITH PTO PROVISION	1079.0 [42.48]

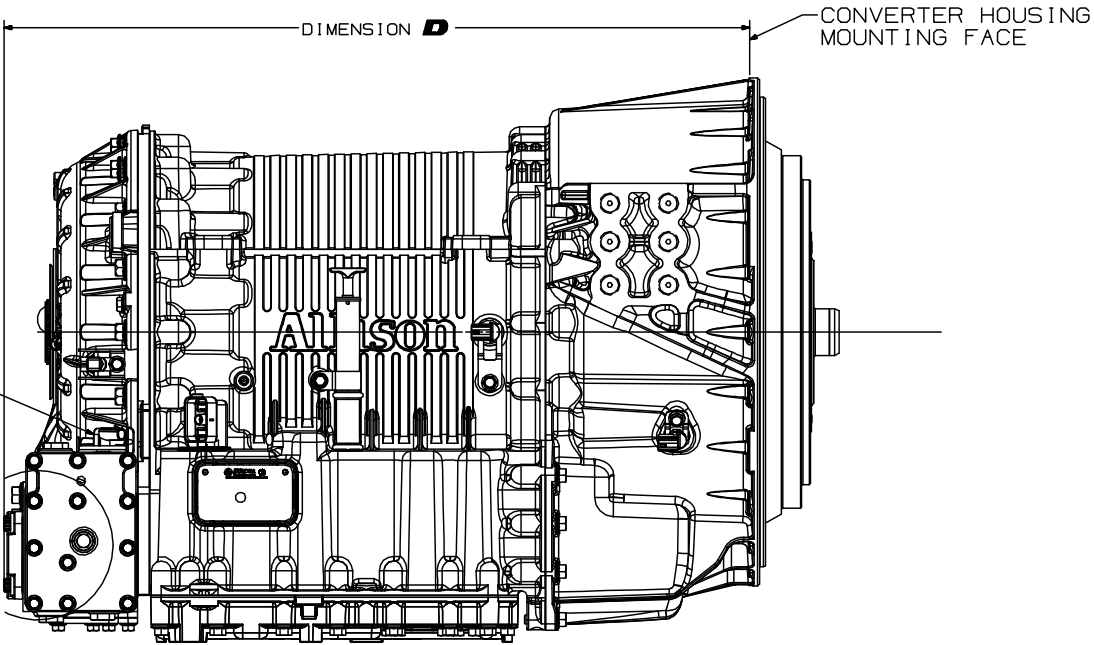
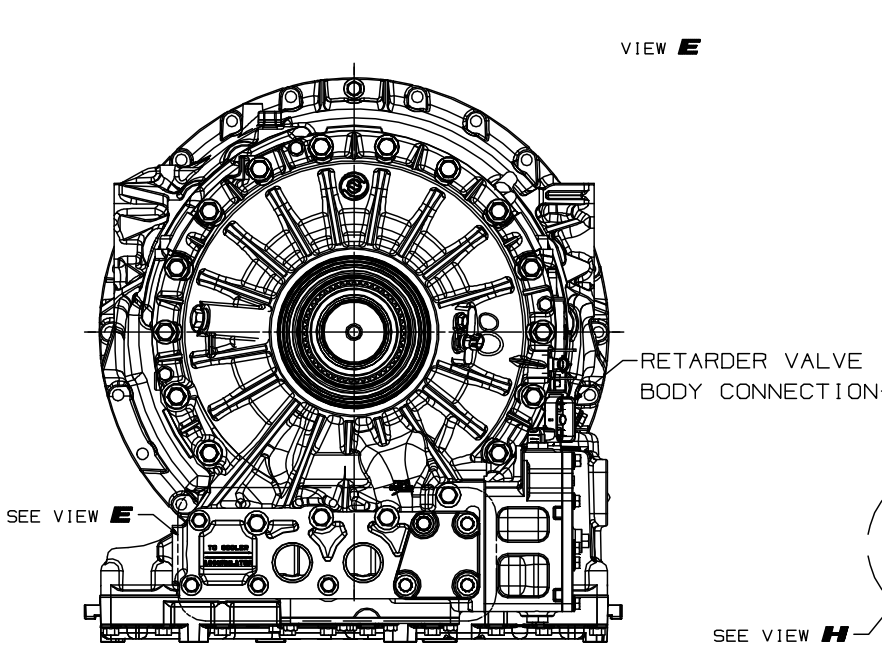
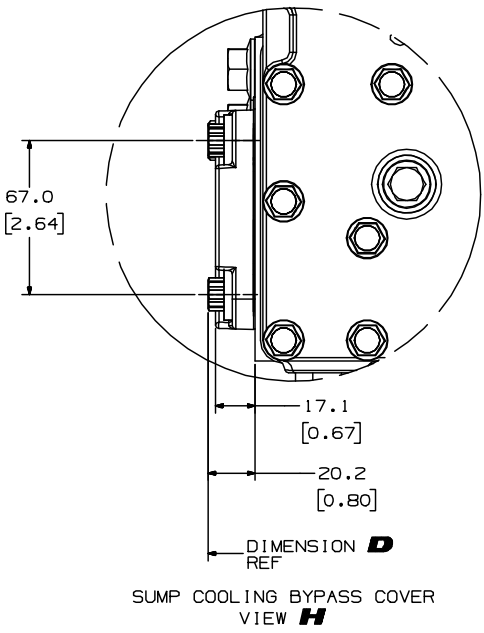
**PROVISION FOR REMOTE RETARDER COOLER
WITH NO SUMP COOLING**



ISOMETRIC VIEW



COOLER RETURN LOCATION
SOCIETY OF AUTOMOTIVE ENGINEERS
1.625-12UN-2B STRAIGHT THREAD
O-RING CONNECTION INCH SERIES THREAD
TORQUE COOLER FITTINGS TO
118-146 N·m [87-108 LB·FT]
("TO COOLER" AND "COOLER RETURN" PORTS)
FOR EXTERNAL HYDRAULIC CIRCUIT REQUIREMENTS
NOT SHOWN, SEE 4000 PRODUCT FAMILY TRANSMISSION DATA.
USE OF FRONT COOLER PORTS ARE NOT ALLOWED WITH RETARDER.



E	(6) REMOVED "ALLISON 4TH GEN CONTROLS" BLOCK	20JN16	RH	JH
	(7) REVISED "M10 X 1.5 HEX-HEAD BOLTS" CALLOUT			
	(8) REVISED "COOLER RETURN LOCATION" CALLOUT			
	(9) REVISED TITLE "PROVISION FOR REMOTE RETARDER COOLER WITH NO SUMP COOLING" WAS "NO SUMP COOLING REMOTE RETARDER/CONVERTER COOLER ONLY"			
D	(9) REMOVED "ALLISON 4TH GENERATION..." BLOCK	09SE14	RH	JH
	(10) REVISED "COOLER RETURN LOCATION..." CALLOUT			
	(11) REVISED "SIDE ACCUMULATOR..." CALLOUT			
	(12) REVISED "M10 X 1.5 HEX..." CALLOUT			
C	REVISED "COOLER RETURN LOCATION" NOTE "DATA SECTION" WAS "SPECIFICATIONS SECTION OF THE TECH DATA BOOK."	08MY08	RH	WF
A	UPDATED TO LATEST HARDWARE	24AUG06	RH	WF
REV	DESCRIPTION	DATE	BY	CHK

NX	FR2
	CHANGE RESTRICTED
METRIC	
THIRD ANGLE	
THE INFORMATION CONTAINED HEREIN IS PROPRIETARY AND THE PROPERTY OF ALLISON TRANSMISSION, INC. AND MAY NOT BE REPRODUCED, DISCLOSED OR USED FOR ANY PURPOSE OTHER THAN A QUOTATION TO OR ON ORDER FROM ALLISON TRANSMISSION, INC. WITHOUT THE SPECIFIC WRITTEN AUTHORIZATION OF ALLISON TRANSMISSION, INC.	

Allison Transmission Indianapolis, Indiana, USA	
INSTL DWG, RETARDER COOLER OPTION, REMOTE	
MODEL 4000 PRODUCT FAMILY	
SIZE	CAGE CODE DWG NO
R	73342 AS67-477
SCALE	NONE
CURRENT STATUS:	RX-Released - EXP

FOR GENERAL NOTES, SEE ON SHEET 1

DIMENSIONS SHOWN IN PARENTHESES ARE
IN INCHES, AND FOR REFERENCE ONLY

FR1	DWG. NO.
	AS67-477

LTR	SH
E	2